

*Lake County's
Oldest & Largest*

Lester's



MATERIAL SERVICE

Landscape Supplies Since 1960

RETAIL PRICE LIST



Lester's has an 8 acre yard and retail store with a variety of...

**UNILOCK PAVERS · FLAGSTONE · BOULDERS
GRAVEL · SAND · MULCH · TOP SOIL
AND MUCH MORE**



For Over 25 Years



FOLLOW US ON FACEBOOK @
LESTER'S MATERIAL SERVICE



For Over 25 Years

VISIT OUR WEBSITE AT: WWW.LESTERSMATERIAL.COM

COMPANY INFO



Established in 1960, Steve, Lori and Bill purchased the company in 1999, making Lester's a 2nd generation family owned and operated business; currently training the 3rd generation. We are a strong, stable company blessed with great customers and longstanding vendor relationships. Lester's operates Lake County's largest topsoil operation, and is a leading supplier of quality construction products, both picked-up and delivered. As a *Unilock Authorized Dealer*, we are also Lake County's oldest and largest residential brick paving installer, including maintenance and repair. Lester's is large enough to handle any size project, commercial or residential, but small enough to give you personalized service. We thank all of those who have grown with us, and all of those who trust us to service their topsoil, landscape and hardscape supply, and installation needs.



LAKE COUNTY'S LARGEST TOPSOIL OPERATION



**LAKE COUNTY'S OLDEST & LARGEST
RESIDENTIAL BRICK PAVER INSTALLER**



**COMMERCIAL & MUNICIPAL
SNOW PLOWING SERVICES**

TOPSOIL, BLENDS & AMENDMENTS

PREMIUM PULVERIZED Screened 1/2" to fines	\$29.00/yard
LAWN & GARDEN MIX Excellent for planting beds or vegetable gardens. A mixture of thirds: Pulverized topsoil, sand and manure/compost	\$40.00/yard
COMPOST 100% organic material	\$32.00/yard

SAND

TORPEDO Course grained, washed, use with pavers as a bedding sand	\$22.00/ton
MASON Fine grained, washed, perfect for beaches / sandboxes	\$29.50/ton

GRAVEL

PEA GRAVEL 1/4" - 3/8" washed	\$22.50/ton
#6 STONE 1/2" - 3/4" washed	\$34.50/ton
#8 STONE 1" - 1-1/2" washed	\$40.00/ton
OLD TIME SCREENINGS 3/8" to fines	Call for availability \$33.00/ton
GRADE 9 3/4" crushed gravel w/fines, for sub-bases	\$33.00/ton
3/8" CLEAR CHIP No fines	\$46.50/ton
3/4" CLEAR CHIP No fines	\$42.00/ton

LIMESTONE

SCREENINGS 1/4" to fines	\$38.00/ton
GRADE 8 3/4" crushed limestone w/fines, for sub-bases	\$38.00/ton
3" - 1" STONE washed	\$45.00/ton
RIP RAP #3 3" to 8" washed	Call for availability \$85.00/ton
RIP RAP #4 3" to 12" washed	Call for availability \$85.00/ton
3/4" CLEAR CHIP No fines	\$44.00/ton

BAGGED LIMESTONE / GRAVEL / SAND Each bag is approximately 90 lbs.	\$7.00/bag
--	------------

MULCH

PREMIUM HARDWOOD BARK MULCH

Dark brown, finer in consistency. The best mulch in Lake County	\$45.00/yard
---	--------------

SHREDDED AGED HARDWOOD MULCH

A beautiful brown and blonde, fades to deep grey once weathered.	\$35.00/yard
PLAYMAT MULCH Specialty mulch for under playsets, ASTM certified	\$36.00/yard
RED BRICK MULCH Fine recycled mulch, dyed red	\$38.00/yard
CEDAR MULCH Light golden brown	\$48.00/yard

Call for contractor quotes, volume pricing and any other materials. Prices subject to change without notice.



PEA GRAVEL



#6 STONE



#8 STONE



GRADE 9



3/8" CLEAR CHIP



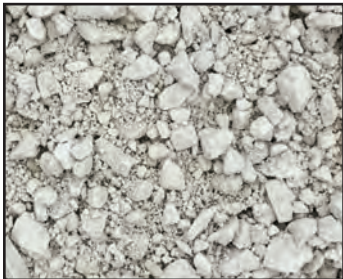
3/4" CLEAR CHIP



OLD TIME SCREENINGS



LIMESTONE SCREENINGS



GRADE 8



3/4" CLEAR CHIP



3" - 1" STONE



TORPEDO SAND



MASON SAND



4" - 8" BOULDERS



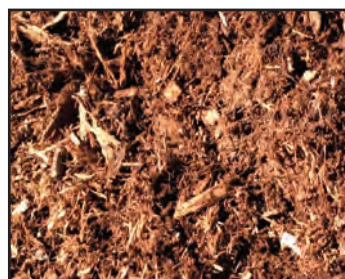
8" - 18" BOULDERS



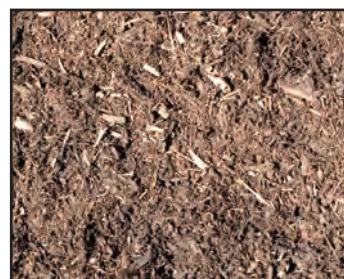
18" - 24" BOULDERS



24" - 36" BOULDERS



**PREMIUM HARDWOOD
BARK MULCH**



**SHREDDED AGED
HARDWOOD MULCH**



**ASTM PLAYGROUND
MULCH**

FOR BULK MATERIAL CALCULATORS - SEE OUR WEBSITE:

WWW.LESTERSMATERIAL.COM

Call for contractor quotes, volume pricing and any other materials. Prices subject to change without notice.

LANDSCAPE FABRIC

PRO 3 OZ.

3' x 50'	\$15.50
4' x 300'	\$96.00
6' x 300'	\$142.00

FABRIC ANCHORS

\$0.15 each

Box of 1000	\$58.00
-------------------	---------

STRAW BLANKET	Lightweight blanket 4' x 112.5' = 450 sq. ft. roll - \$30.00
	Lightweight blanket 8' x 112.5' = 900 sq. ft. roll - \$60.00

STRAW BALES	\$9.00 each
-------------------	-------------

GRASS SEED

1 lb. covers approximately 175 sq. ft.

LESTER'S SUNNY MIX GRASS SEED

45% Kentucky Bluegrass, 30% Perennial Rye, 25% Creeping Red Fescue

5 lb. Bag	\$12.00
25 lb. Bag	\$60.00

LESTER'S / QWIK SOD GRASS SEED

40% Kentucky Bluegrass, 60% Perennial Rye

5 lb. Bag	\$14.00
25 lb. Bag	\$67.00

LESTER'S DENSE SHADE GRASS SEED

40% Kentucky Bluegrass, 25% Perennial Rye, 15% Ambrose Chewing Fescue, 15% Creeping Red Fescue, 5% Trivialis

5 lb. Bag	\$14.00
25 lb. Bag	\$69.50

BLUESTONE

Dark Blue / Grey Slate in cut sizes, Perfect for walkways and patios. \$10.25/sq. ft.

Natural cleft, Nominal sizes

COBBLESTONE BOULDERS

These granite boulders are round in shape and are earth tone in color, some solid and some speckled.

*Please note: When purchasing boulders, any quantity less than 1,000 lbs. (1/2 ton) will be charged the pound rate.

SMALL 4" - 8" One ton covers approx. 35 sq. ft., 10-25 lbs., approx. 120-160/ton . \$125.00/ton or .09/lb.

MEDIUM 8" - 18" One ton covers approx. 25 sq. ft., 25-100 lbs., approx. 40-60/ton . \$135.00/ton or .10/lb.

LARGE 18" - 24" One ton covers approx. 22 sq. ft., 100-300 lbs., approx. 12-15/ton . \$140.00/ton or .10/lb.

X-LARGE 24" - 36" One ton covers approx. 20 sq. ft., 300-700 lbs., approx. 4-6/ton . \$145.00/ton or .12/lb.

NATURAL STONE

FONDULAC SILVER OR BUFF

FLAGSTONE STEPPERS 1 ton covers approx. 75 sq. ft.	\$475.00/ton or \$.27/lb
IRREGULAR FLAGSTONE	\$833.00/ton or \$.45/lb
OUTCROPPING	\$325.00/ton or \$.20/lb

CHILTON (Blueish grey, redish purple and gold natural coloring)

FLAGSTONE STEPPERS 1 ton covers approx. 75 sq. ft.	\$475.00/ton or \$.27/lb
8" WEATHER EDGED WALLSTONE (Cut drywall)	\$425.00/ton or \$.25/lb
IRREGULAR FLAGSTONE	\$833.00/ton or \$.45/lb
OUTCROPPING WEATHER EDGE	\$325.00/ton or \$.20/lb

LANNON OUTCROPPING (Greys to Buffs)	\$325.00/ton or \$.20/lb
--	--------------------------

*Please note: When purchasing natural stone, any quantity less than 1,000 lbs. (1/2 ton) will be charged the pound rate.

PAVER CLEANING & SEALING PRODUCTS

TECHNISEAL PAINT, TAR & RUBBER REMOVER 1 Quart.....	\$30.00
TECHNISEAL RUST REMOVER 1 Quart.....	\$22.50
TECHNISEAL OIL & GREASE REMOVER 1 Quart	\$28.00
TECHNISEAL PAVER PRIMER & EFFLORESCENCE REMOVER 1 Gallon.....	\$38.00
SPECCOSEAL PAVESHEEN Wet look, solvent based	\$41.50/Gal or \$177.50/5 Gal
SPECCOSEAL ENVIROSHEEN Wet look, water based	\$53.50/Gal or \$225.00/5 Gal
SPECCOSEAL S.J.S. JOINT STABILIZER Matte/natural finish, water based .	\$59.50/Gal or \$268.00/5 Gal
SRW VERTICAL INSTANT LOCK ADHESIVE 9.5 oz. tube	\$9.50
ROLLERS 8" and 18"	Prices vary
CAULKING GUNS heavy duty, contractor grade 18:1 Thrust Ratio	Prices vary
HUDSON® ACETONE SPRAYER 2.5 Gallon with 20" brass reinforced wand	\$135.00
BP PRO NSS Natural Stabilizing Sealer, Water based	\$48.50/Gal
BP PRO ESS Enhancing Stabilizing Sealer, Water based	\$51.50/Gal
BP PRO WSS Wet Look Stabilizing Sealer, Solvent based	\$55.50/Gal

ALLIANCE PRODUCTS

SUPER SAND POLYMERIC 50 lb. bags fills up to 1" joints ... Beige ..	\$27.50...	Slate Grey ..	\$30.75	
GATOR MAXX POLYMERIC 50 lb. bags fills up to 2" joints Beige ..	\$32.00...	Slate Grey ..	\$34.50	
GATOR DUST POLYMERIC 50 lb. bags fills 1/2" - 6" joints	Beige ..	\$32.50...	Slate Grey ..	\$32.50
GATOR BLOCK BOND XTRA PERFORMANCE ADHESIVE				
Specifically designed for Brick, Block, Stone & Masonry	10 oz. tube ..	\$7.50 ..	28 oz. tube ..	\$12.50

Call for contractor quotes, volume pricing and any other materials. Prices subject to change without notice.

OUTDOOR LIGHTING

6" WALL LIGHT LED Powder Coated \$96.00 each

RETAINING WALL GRID BI-DIRECTIONAL

4' x 50' roll \$75.00

6' x 150' roll \$335.00

SPIKES

12" SPIKES 125 per box..... \$60.00 or \$0.60 each

BRICK PAVER EDGING

SNAP EDGE 8' long, cut the small part for curves \$14.99

BAGGED CEMENT / BLACK TOP

PORTLAND CEMENT 94 lb. bag..... \$22.75

QUICKRETE MASONRY CEMENT 70 lb. bag – Commercial Grade, Type N \$15.80

QUICKRETE CONCRETE MIX 80 lb. bag – includes gravel, just add water..... \$6.80

QUICKRETE MORTOR MIX 60 lb. bag – includes sand, just add water..... \$7.00

REBAR

1/2" X 20' ROD \$11.00

DRAINAGE PRODUCTS



4" CORRUGATED DRAIN TILE & FITTINGS

4" x 10' SOLID OR PERFORATED Solid: \$6.00, Perforated: \$6.00, Perforated with sock: \$7.00

4" x 100' SOLID OR PERFORATED ... Solid: \$55.00, Perforated: \$65.00, Perforated with sock: \$75.00

4" ELBOW..... \$7.50

4" EXTERNAL SNAP COUPLER..... \$4.50

4" WYE..... \$7.50

4" TEE \$6.50

4" END CAP Solid or Perforated \$4.50

4" OFFSET DOWNSPOUT ADAPTER 2" x 3"..... \$4.50

4" CORRUGATED TO PVC ADAPTER \$5.50

4" PVC PIPE & FITTINGS

4" X 10' SDR35 SOLVENT WELD SOLID \$18.50

4" SDR35 ELBOW Short turn or Long turn \$7.00

4" SDR35 COUPLER..... \$5.00

4" POP UP EMITTER WITH ELBOW..... \$19.50

4" POP UP EMITTER \$13.50

5" SQUARE GRATES Tan or Black..... \$5.00

Additional products available

Call for contractor quotes, volume pricing and any other materials. Prices subject to change without notice.

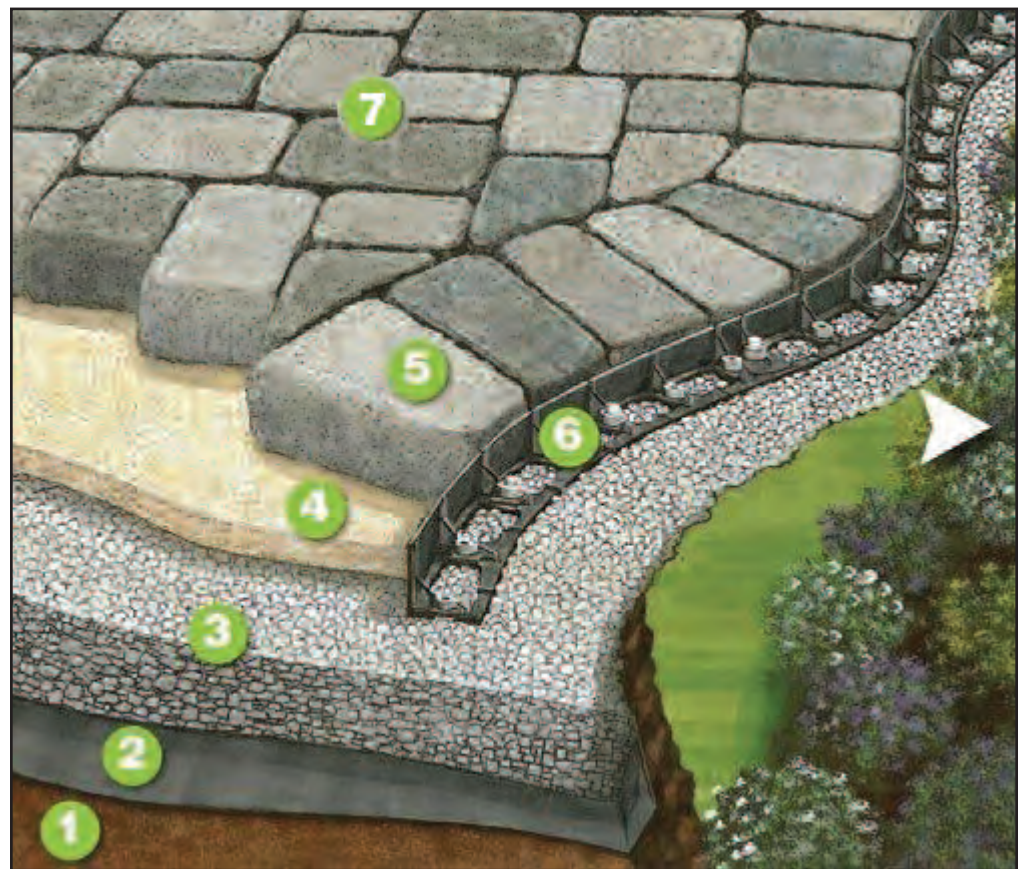
Lester's Material Service, Inc. provides design and installation of your paver project.



We can also help you do it yourself, check out our website for calculations!

**"BEST PRACTICE"
TYPICAL SEGMENTAL
PAVER INSTALLATION**

- 1** Compacted Soil Subgrade
- 2** Separation Fabric
- 3** Compacted Aggregate Base "Lester's Grade 9"
- 4** Bedding Sand "Lester's Torpedo"
- 5** Pavers
- 6** Snap Edge Paver Restraint
- 7** Jointing or Polymeric Sand



**ALLIANCE SUPERSAND
POLYMERIC**



**ALLIANCE GATOR
MAXX POLYMERIC**



**ALLIANCE GATOR
DUST POLYMERIC**



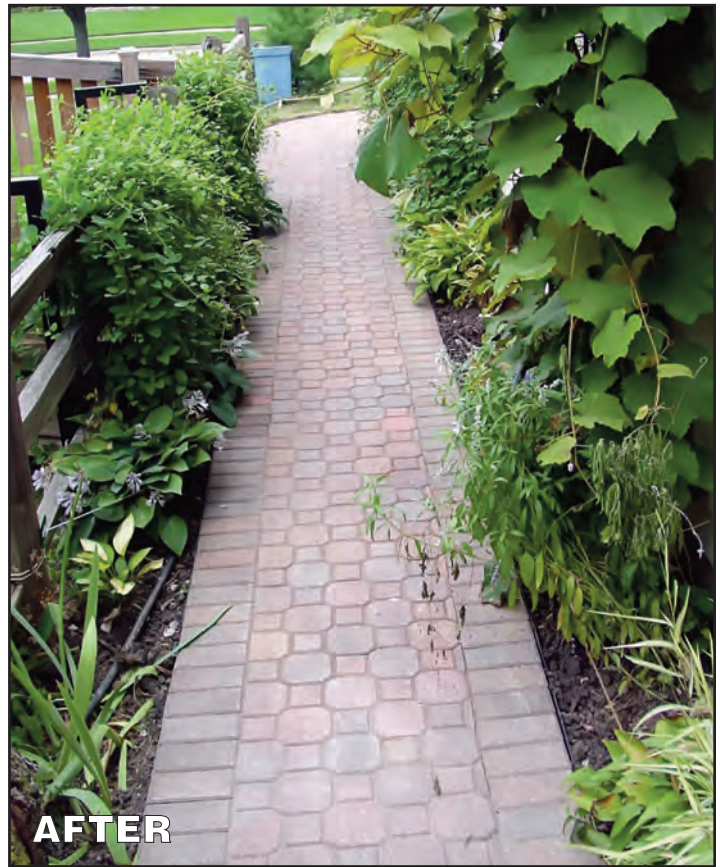
**GATOR BLOCK BOND
XP ADHESIVE**

Call for contractor quotes, volume pricing and any other materials. Prices subject to change without notice.

We are also Lake County's premier contractor for repair and maintenance



BEFORE



AFTER



BEFORE



AFTER



BEFORE



AFTER

Call for contractor quotes, volume pricing and any other materials. Prices subject to change without notice.

UNILOCK PAVERS

ARCANA 24" x 24" 72 sq. ft. / 18" x 24" 54 sq. ft. / 12" x 24" 36 sq. ft..... \$9.06 sq. ft.



ARTLINE SMOOTH FINISH 93.25 sq. ft. per pallet \$8.25 sq. ft.
ARTLINE ANTIQUED FINISH..... 93.25 sq. ft. per pallet \$8.25 sq. ft.
ARTLINE IL CAMPO FINISH..... 93.25 sq. ft. per pallet \$7.00 sq. ft.

SMOOTH FINISH

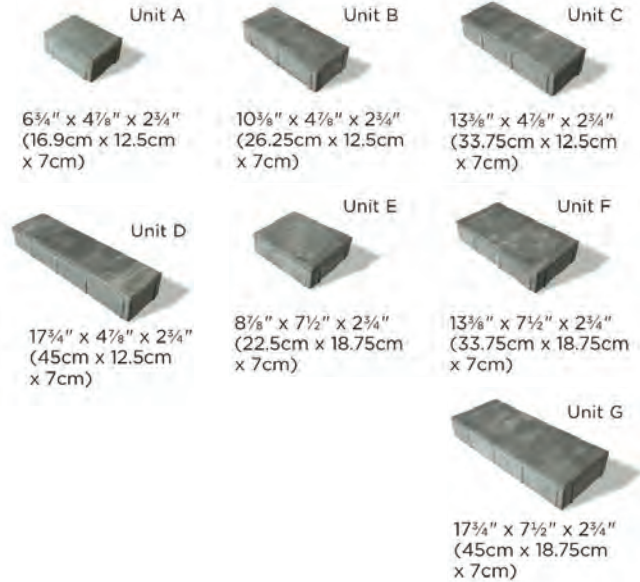


BAVARIAN BLEND STEEL MOUNTAIN COPPER RIDGE

ANTIQUED FINISH



BAVARIAN BLEND STEEL MOUNTAIN COPPER RIDGE



BEACON HILL SMOOTH FINISH 104 sq. ft. per pallet / 6 cm \$6.88 sq. ft.



BAVARIAN GRANITE FUSION OPAL



BEACON HILL FLAGSTONE 6CM..... 104 sq. ft. per pallet \$6.44 sq. ft.
BEACON HILL FLAGSTONE 8CM..... 104 sq. ft. per pallet \$8.56 sq. ft.



ALPINE GREY BAVARIAN BLEND SYCAMORE



LARGE RECTANGLE
21¹/₄" x 14¹/₈" x 2³/₈"
54cm x 36cm x 6cm



SQUARE
14¹/₈" x 14¹/₈" x 2³/₈"
36cm x 36cm x 6cm



SMALL RECTANGLE
7¹/₁₆" x 14¹/₈" x 2³/₈"
18cm x 36cm x 6cm



XL UNIT
21 x 35 x 2³/₈"
54 x 90 x 6cm
Sold Separately

BRISTOL VALLEY 6CM..... 104 sq. ft. per pallet \$7.81 sq. ft.
BRISTOL VALLEY 8CM..... 72.80 sq. ft. per pallet \$9.88 sq. ft.



BAVARIAN BLEND STEEL MOUNTAIN COPPER RIDGE



LARGE RECTANGLE
21¹/₄" x 14¹/₈" x 2³/₈"
54cm x 36cm x 6cm



SQUARE
14¹/₈" x 14¹/₈" x 2³/₈"
36cm x 36cm x 6cm



SMALL RECTANGLE
7¹/₁₆" x 14¹/₈" x 2³/₈"
18cm x 36cm x 6cm



XL UNIT
21 x 35 x 2³/₈"
54 x 90 x 6cm

BRUSSELS XL STONE 93.86 sq. ft. / 3 section \$5.18 sq. ft.
BRUSSELS STANDARD 94.91 sq. ft. / 6 section \$5.18 sq. ft.
BRUSSELS HALF STONE 88.7 sq. ft. / 7 section \$5.18 sq. ft.



COFFEE CREEK LIMESTONE PRAIRIE SANDSTONE SIERRA



XL STONE
8¹/₄" x 13³/₄" x 2³/₄"
20.8cm x 34.8cm x 7cm



STANDARD STONE
6⁷/₈" x 8¹/₄" x 2³/₄"
17.3cm x 20.8cm x 7cm



HALF STONE
4¹/₈" x 6⁷/₈" x 2³/₄"
10.4cm x 17.8cm x 7cm



BRUSSELS PREMIER XL STONE 93.86 sq. ft. / 3 section \$6.53 sq. ft.
BRUSSELS PREMIER STANDARD 94.91 sq. ft. / 6 section \$6.53 sq. ft.
BRUSSELS PREMIER HALF STONE ... 88.7 sq. ft. / 7 section \$6.53 sq. ft.



ALPINE GREY BAVARIAN BLEND SYCAMORE



XL STONE
 $8\frac{1}{4}'' \times 13\frac{3}{4}'' \times 2\frac{3}{4}''$
 20.8cm x 34.8cm x 7cm



STANDARD STONE
 $6\frac{7}{8}'' \times 8\frac{1}{4}'' \times 2\frac{3}{4}''$
 17.8cm x 20.8cm x 7cm



HALF STONE
 $4\frac{1}{8}'' \times 6\frac{1}{8}'' \times 2\frac{3}{4}''$
 10.4cm x 17.8cm x 7cm

BRUSSELS FULLNOSE 96 sq. ft. / 4 section \$6.19 sq. ft.



COFFEE CREEK LIMESTONE SANDSTONE SIERRA

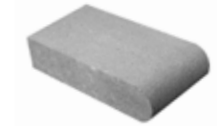


STANDARD
 $6'' \times 12'' \times 2\frac{3}{4}''$
 15cm x 30.5cm x 7cm

6" X 12" FULLNOSE 96 sq. ft. / 4 section \$5.52 sq. ft.



COFFEE CREEK LIMESTONE SANDSTONE SIERRA



6" x 12" FULLNOSE
 $6 \times 12 \times 2\frac{3}{4}''$
 15 x 30.5 x 7cm

CAMELOT LARGE RECTANGLE 74.4 sq. ft. / 5 section \$3.56 sq. ft.



AUTUMN RED SIERRA FIELDSTONE CHARCOAL
 Only available in Large Rectangle size



LARGE RECTANGLE
 $6\frac{1}{4}'' \times 9\frac{1}{2}'' \times 3\frac{1}{8}''$
 16cm x 24cm x 8cm

COPTHORNE 89.2 sq. ft. per pallet \$10.31 sq. ft.



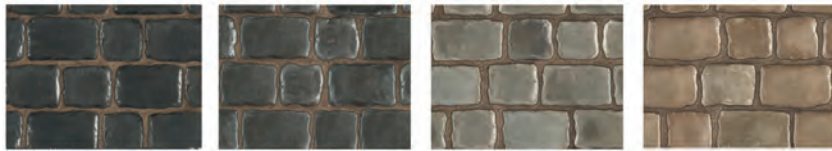
BURGUNDY RED BURNT CLAY OLD OAK BASALT 3 COLOR BLEND
 Sold Separately/
 Blended on Site STEEL BLUE



STANDARD
 $2\frac{1}{2}'' \times 7\frac{1}{8}'' \times 2\frac{3}{8}''$
 6.5cm x 20cm x 6cm

Call for contractor quotes, volume pricing and any other materials. Prices subject to change without notice.

COURTSTONE 98.3 sq. ft. per pallet / full random \$10.31 sq. ft.



BASALT **BELGIAN BLUE** **DAWN MIST** **PEBBLE TAUPE**



**BASALT/
BELGIAN BLUE**
Sold Separately/
Blended on Site

**DAWN MIST/
PEBBLE TAUPE**
Sold Separately/
Blended on Site



XL RECTANGLE
5 1/8" x 8 3/8" x 2 3/8"
13cm x 21.5cm x 6cm

LARGE RECTANGLE
5 1/8" x 7 1/4" x 2 3/8"
13cm x 18.5cm x 6cm



RECTANGLE
5 1/8" x 6 1/2" x 2 3/8"
13cm x 16.5cm x 6cm

SMALL RECTANGLE
5 1/8" x 5 3/4" x 2 3/8"
13cm x 14.5cm x 6cm

SQUARE
5 1/8" x 5 1/8" x 2 3/8"
13cm x 13cm x 6cm

ECO PRIORA STANDARD FINISH Rectangle 74.6 sq. ft. \$4.08 sq. ft.

ECO PRIORA ANTIQUED FINISH Rectangle 74.6 sq. ft. \$5.82 sq. ft.



RIVER STANDARD FINISH **SIERRA STANDARD FINISH** **SIERRA ANTIQUED FINISH** **RIVER ANTIQUED FINISH**
Available in 5" x 10" Only Available in 5" x 10" Only



RECTANGLE
5" x 10" x 3 1/8"
12cm x 24cm x 8cm

HOLLAND PREMIER™ 6CM 117.9 sq. ft. per pallet / 6 section. \$4.94 sq. ft.



CHARLESTON **GRANITE BLEND** **HERITAGE BROWN** **RIVER** **SIERRA** **BROWN**



STANDARD
4" x 8" x 2 3/8"
10cm x 20cm x 6cm

HOLLANDSTONE™ 117.9 sq. ft. per pallet / 6 section. \$2.76 sq. ft.



AUTUMN RED **CHARCOAL** **PRAIRIE** **RED**



RIVER **RUSTIC RED** **SIERRA**



HOLLANDSTONE
4" x 8" x 2 3/8"
10cm x 20cm x 6cm



IL CAMPO® 4" X 8" 106.11 sq. ft. per pallet / 6 section \$7.00 sq. ft.
IL CAMPO® RANDOM BUNDLE 89.12 sq. ft. per pallet \$7.00 sq. ft.

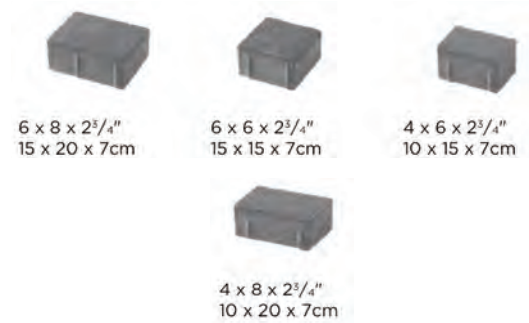


BAVARIAN BLEND **COFFEE CREEK**
Available in Random Bundle Only
HERITAGE BROWN **GRANITE**
Only Available in 4x8

ARTLINE SIZES AVAILABLE

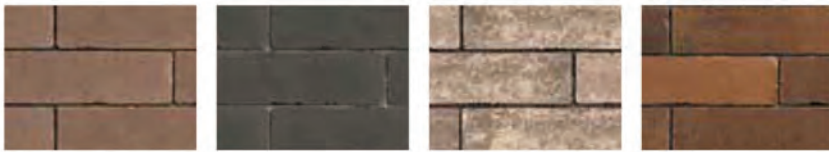


BAVARIAN **GRANITE**



6 x 8 x 2⁵/₄"
15 x 20 x 7cm
6 x 6 x 2⁵/₄"
15 x 15 x 7cm
4 x 6 x 2⁵/₄"
10 x 15 x 7cm
4 x 8 x 2⁵/₄"
10 x 20 x 7cm

MATTONI 89.28 sq. ft. per pallet \$6.88 sq. ft.



COCOA BROWN **DARK CHARCOAL** **SABLE BLEND** **CHARLESTON**



STANDARD
2¹/₄ x 9¹/₂ x 2³/₈"
6 x 24 x 7cm

OLDE GREENWICH COBBLE® RECTANGLE ... 97.6 sq. ft. per pallet / 6 section ... \$3.58 sq. ft.
OLDE GREENWICH COBBLE® LARGE RECT ... 113.7 sq. ft. per pallet / 5 section ... \$3.58 sq. ft.



AUTUMN RED **RIVER BLEND** **SIERRA**

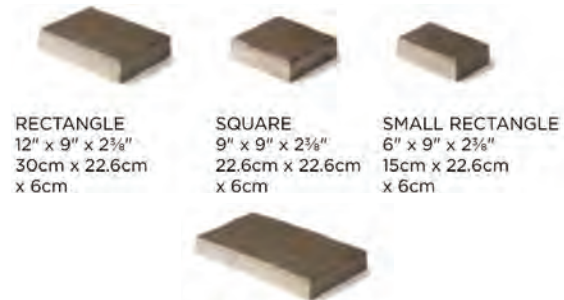


LARGE RECTANGLE
7" x 9¹/₂" x 2⁵/₈"
18cm x 24cm x 6cm
MEDIUM RECTANGLE
4³/₄" x 7" x 2⁵/₈"
12cm x 18cm x 6cm

RICHCLIFF® LARGE RECTANGLE 82.39 sq. ft. per pallet \$10.31 sq. ft.
RICHCLIFF® RANDOM FULL BUNDLE .. 90.3 sq. ft. per pallet \$10.31 sq. ft.



DAWN MIST **PEBBLE TAUPE** **PEBBLE TAUPE / DAWN MIST**
Blended on site / Sold Separately
SMOKE SHALE



RECTANGLE
12" x 9" x 2³/₈"
30cm x 22.6cm x 6cm
SQUARE
9" x 9" x 2³/₈"
22.6cm x 22.6cm x 6cm
SMALL RECTANGLE
6" x 9" x 2³/₈"
15cm x 22.6cm x 6cm
LARGE RECTANGLE
21 x 12 x 2³/₈"
52.8 x 30.2 x 6cm
SOLD SEPARATELY

Call for contractor quotes, volume pricing and any other materials. Prices subject to change without notice.

RIVENSTONE™ 24" X 30"	90 sq. ft. per pallet.....	\$8.23 sq. ft.
RIVENSTONE™ 24" X 24"	72 sq. ft. per pallet.....	\$8.23 sq. ft.
RIVENSTONE™ 18" X 24"	54 sq. ft. per pallet.....	\$8.23 sq. ft.
RIVENSTONE™ 12" X 24"	36 sq. ft. per pallet.....	\$8.23 sq. ft.



BLUESTONE



CANYON



SAHARA



24 x 30 x 1 1/4"
60 x 76 x 4.5cm



24 x 24 x 1 1/4"
60 x 60 x 4.5cm



18 x 24 x 1 1/4"
45 x 60 x 4.5cm



12 x 24 x 1 1/4"
30 x 60 x 4.5cm

SERIES 3000® 4" X 8" RECTANGLE	106.11 sq. ft. per pallet / 6 section.....	\$8.19 sq. ft.
SERIES 3000® RANDOM BUNDLE	104 sq. ft. per pallet.....	\$7.75 sq. ft.



MINERAL ICE GREY



MOCHA BROWN
Available in 4x8 only



ONYX BLACK
Available in 4x8 only



GOLDEN TAN
Available in 4x8 only



4 x 8 x 2 3/4"
10 x 20 x 7cm



COBALT GREY
Available in Random bundle only

Random Bundle available in Mineral Ice Grey and Cobalt Grey only



LARGE RECTANGLE
2 1/4" x 14 1/8" x 2 5/8"
54 x 36 x 6cm



SQUARE
14 1/8" x 14 1/8" x 2 5/8"
36 x 36 x 6cm



SMALL RECTANGLE
7 1/16" x 14 1/8" x 2 5/8"
18 x 36 x 6cm

SENZO™ RECTANGLE	82.67 sq. ft. per pallet.....	\$13.44 sq. ft.
-------------------------------	-------------------------------	-----------------



CASTANO



NUVOLA



CREMO



RECTANGLE
8 x 16 x 2 3/4"
20.8 x 41.6 x 7cm

THORNBURY™ LARGE RECTANGLE	50.63 sq. ft. per pallet / Random Bundle 88.61 sq. ft.	\$6.98 sq.ft.
THORNBURY™ MEDIUM RECTANGLE ..	25.32 sq. ft. per pallet / Random Bundle 88.61 sq. ft.	\$6.98 sq.ft.
THORNBURY™ SMALL RECTANGLE	12.66 sq. ft. per pallet / Random Bundle 88.61 sq. ft.	\$6.98 sq.ft.



ALPINE GREY



BAVARIAN BLEND



SYCAMORE



LARGE RECTANGLE
13 3/4" x 16 1/2" x 2 3/4"
(35cm x 42cm x 7cm)



MEDIUM RECTANGLE
13 3/4" x 8 3/4" x 2 3/4"
(35cm x 21cm x 7cm)



SMALL RECTANGLE
6 7/8" x 8 3/4" x 2 3/4"
(17.3cm x 21cm x 7cm)

Call for contractor quotes, volume pricing and any other materials. Prices subject to change without notice.



TOWN HALL™ 88.41 sq. ft. per pallet \$12.00 sq. ft.



BURGUNDY RED **BURNT CLAY** **OLD OAK** **3 COLOR BLEND**
Blended on Site / Sold separately

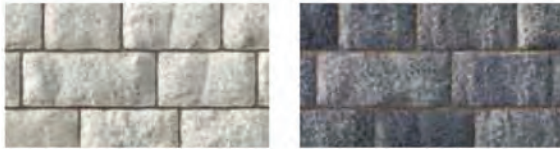


BASALT **HERITAGE RED** **HERITAGE CLAY** **HERITAGE 2 COLOR BLEND**
Blended on Site / Sold Separately



STANDARD
4 x 9³/₄ x 2³/₄"
10 x 25 x 7cm

TRIBECA COBBLE 97.53 sq. ft. per pallet \$8.44 sq. ft.



PEPPERED GRANITE **COBALT GREY**



LARGE RECTANGLE **RECTANGLE** **SMALL RECTANGLE**
5¹/₈ x 12 x 2³/₄" 5¹/₈ x 9 x 2³/₄" 5¹/₈ x 7 x 2³/₄"
13 x 30.5 x 7cm 13 x 23 x 7cm 13 x 17.5 x 7cm

UMBRIANO® 4" x 8" 106.11 sq. ft. per pallet \$11.00 sq. ft.

UMBRIANO® RANDOM BUNDLE 94.20 sq. ft. per pallet \$11.00 sq. ft.

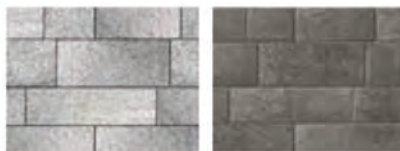


MIDNIGHT SKY **SUMMER WHEAT** **WINTER MARVEL** **FRENCH GREY** **HARVEST BROWN**



4 x 8 x 2³/₈"
10 x 20 x 6cm

ARTLINE SIZES AVAILABLE



WINTER MARVEL **MIDNIGHT SKY**



LARGE RECTANGLE **SQUARE** **SMALL RECTANGLE**
21 x 14 x 2³/₈" 14 x 14 x 2³/₈" 7 x 14 x 2³/₈"
52.5 x 35 x 6cm 35 x 35 x 6cm 17.5 x 35 x 6cm

YORKSTONE™ 24" x 24" 72 sq. ft. per pallet \$8.23 sq. ft.

YORKSTONE™ 18" x 24" 54 sq. ft. per pallet \$8.23 sq. ft.

YORKSTONE™ 12" x 24" 36 sq. ft. per pallet \$8.23 sq. ft.



HONEY GOLD **IRON RIVER**



24" x 24" x 1¹/₂" 18" x 24" x 1¹/₂" 12" x 24" x 1¹/₂"
60cm x 60cm x 4.5cm 45cm x 60cm x 4.5cm 30cm x 60cm x 4.5cm

Call for contractor quotes, volume pricing and any other materials. Prices subject to change without notice.

WESTPORT™ RECTANGLE..... 94.19 sq. ft. per pallet..... \$4.62 sq. ft.
WESTPORT™ RANDOM BUNDLE..... 94.19 sq. ft. per pallet..... \$4.62 sq. ft.



GRANITE

SIERRA

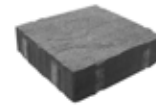
PUEBLO



RECTANGLE
5 x 10 x 2 3/4"
12.7 x 25.4 x 7cm



LARGE RECTANGLE
10 x 15 x 2 3/4"
25.4 x 38 x 7cm



SQUARE
10 x 10 x 2 3/4"
25.4 x 25.4 x 7cm



RECTANGLE
5 x 10 x 2 3/4"
12.7 x 25.4 x 7cm

UNILOCK VERTICAL ELEMENTS

BRUSSELS DIMENSIONAL® STANDARD 32 face ft. / 96 units..... \$4.40 per unit
BRUSSELS DIMENSIONAL® SMALL TAPERED ... 36 face ft. / 144 units..... \$13.08 per face ft.
UNIVERSAL BASE 99.46 face ft. / 54 units \$5.00 per unit



COFFEE CREEK

LIMESTONE

PRAIRIE

SANDSTONE



STANDARD
4" x 8" x 12"
10cm x 20cm x 30cm



SMALL TAPERED UNIT
9" x 4" x 8"
22.9 x 10cm x 20cm



SIERRA



UNIVERSAL BASE UNIT
19" x 14" x 2"
48.2cm x 35.5cm x 5.5cm

Small Tapered Units
are only sold in Coffee
Creek, Sandstone and
Sierra colors.

CUMBERLAND WALL® 31.25 face ft. / 60 units \$20.63 per face ft.
CUMBERLAND WALL® CORNER 18.76 face ft. / 36 units \$20.63 per face ft.
UNIVERSAL BASE 99.46 face ft. / 54 units \$5.00 per unit



RIVER

SANDSTONE

SIERRA



6" LARGE UNIT
15 (12 1/2) x 6 x 9"
38 (32) x 15 x 23cm



6" MEDIUM UNIT
12 1/2 (10) x 6 x 9"
32 (25) x 15 x 23cm



6" SMALL UNIT
10 (7 1/2) x 6 x 9"
25 (19) x 15 x 23cm



6" CORNER/PILLAR UNIT
12 1/2 x 6 x 9"
32 x 15 x 23cm



UNIVERSAL BASE UNIT
19" x 14" x 2"
48.2cm x 35.5cm x 5.5cm

ESTATE WALL® 3" RANDOM 25.12 face ft. / 4 sections / 96 units \$14.70 per face ft.
ESTATE WALL® 6" RANDOM 31.25 face ft. / 4 sections / 60 units \$14.70 per face ft.
ESTATE WALL® CORNER 3" 18.75 face ft. / 4 sections / 64 units \$15.80 per face ft.
ESTATE WALL® CORNER 6" 20.83 face ft. / 4 sections / 40 units \$15.80 per face ft.
ESTATE WALL® COPING 3" 18.75 face ft. / 3 sections / 72 units \$4.13 per unit



GRANITE
available in 3" & 6"



RIVER
available in 3" & 6"



SIERRA
available in 3" & 6"



FIELDSTONE
available in 6" only



COFFEE CREEK
available in 6" Only



SANDSTONE
available in 6" only



UNIVERSAL BASE UNIT
19" x 14" x 2"
48.2cm x 35.5cm x 5.5cm



COPING
12 1/2 (9 1/2) x 3 x 12"
32 (24) x 7.5 x 30cm



6" CORNER
12 1/2 x 6 x 9"
32 x 15 x 23cm



3" CORNER
12 1/2 x 3 x 9"
32 x 7.5 x 23cm



6" LARGE UNIT
15 (12 1/2) x 6 x 9"
38 (32) x 15 x 23cm



6" MEDIUM UNIT
12 1/2 (10) x 6 x 9"
32 (25) x 15 x 23cm



6" SMALL UNIT
10 (7 1/2) x 6 x 9"
25 (19) x 15 x 23cm



3" LARGE UNIT
15 (12 1/2) x 3 x 9"
38 (32) x 7.5 x 23cm



3" MEDIUM UNIT
12 1/2 (10) x 3 x 9"
32 (25) x 7.5 x 23cm

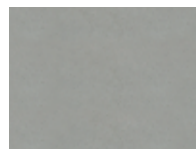


3" SMALL UNIT
10 (7 1/2) x 3 x 9"
25 (19) x 7.5 x 23cm

LEDGESTONE™ FULLNOSE TREAD 32 lin. ft. / 16 units \$25.63 per unit
LEDGESTONE™ COPING 24 lin. ft. / 12 units \$26.00 per unit
LEDGESTONE™ CLOSED END COPING 24 lin. ft. / 12 units \$26.56 per unit
LEDGESTONE™ PILLAR CAP 24" x 24" x 4" 5 units \$124.38 per unit
LEDGESTONE™ STEP UNIT 36" x 18" x 6" 9 lin. ft. / 3 units \$133.78 per unit
LEDGESTONE™ STEP UNIT 48" x 24" x 6" 12 lin. ft. / 3 units \$185.35 per unit
LEDGESTONE™ STEP UNIT 72" x 24" x 6" 18 lin. ft. / 3 units \$270.94 per unit



BUFF



GREY



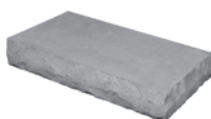
24" PILLAR CAP
24 x 24 x 4"
61 x 61 x 10cm



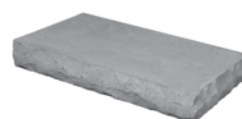
FULLNOSE COPING
12 x 24 x 1 3/4"
30.5 x 61 x 4.5cm



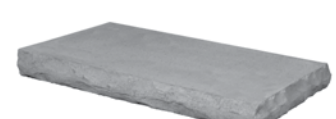
CLOSED-END COPING
12 x 24 x 3"
30.5 x 61 x 7.5cm



36" LEDGESTONE STEP
36 x 18 x 6"
91.4 x 45.7 x 15.2cm



48" LEDGESTONE STEP
48 x 24 x 6"
122 x 61 x 15.2cm



72" LEDGESTONE STEP
72 x 24 x 6"
183 x 61 x 15.2cm

LINEO™ DIMENSIONAL STONE RANDOM 31.9 face ft. / 63 units \$15.00 per face ft.

LINEO™ DIMENSIONAL STONE CORNER UNIT . 47.8 face ft. / 72 units \$15.00 per face ft.



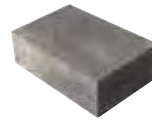
GRANITE



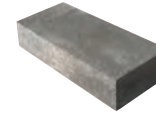
SANDALWOOD



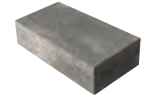
SIERRA



PILLAR UNIT
12 x 4 x 8"
30 x 10 x 20cm



XL RECTANGLE
24" x 4" x 8"
60cm x 10cm x 20cm



LARGE RECTANGLE
20" x 4" x 8"
50cm x 10cm x 20cm



UNIVERSAL BASE UNIT
19 x 14 x 2"
48.2cm x 35.5cm x 5.5cm



LEDGESTONE PILLAR CAP
24 x 24 x 4"
61 x 61 x 10cm



RECTANGLE
16" x 4" x 8"
40cm x 10cm x 20cm



SMALL RECTANGLE
12" x 4" x 8"
30cm x 10cm x 20cm

OLDE QUARRY® WALL 33.75 face ft. / 5 sections / 90 units \$13.86 per face ft.

OLDE QUARRY® CORNER 30.89 face ft. / 4 sections / 80 units \$14.52 per face ft.

OLDE QUARRY® COPING 24 face ft. / 4 sections / 96 units \$3.62 per unit



COFFEE CREEK



RIVER



SANDSTONE



SIERRA



CORNER
4 1/2" x 9" x 12"
11cm x 23cm x 30cm



COPING UNIT
12" (9") x 3" x 12"
30.5cm (23cm) x 7.5cm x 30.5cm



FIELDSTONE



UNIVERSAL BASE UNIT
19" x 14" x 2"
48.2cm x 35.5cm x 5.5cm



9" UNIT
9" (6") x 4 1/2" x 9"
23cm (15cm) x 11.5cm x 23cm



12" UNIT
12" (9") x 4 1/2" x 9"
30.5cm (15cm) x 11.5cm x 23cm



15" UNIT
15" (12") x 4 1/2" x 9"
38cm (30.5cm) x 11.5cm x 23cm

PISA II WALL 20 face ft. / 30 double units / 2 sections. \$9.30 per dbl. unit

PISA II CORNER 30 face ft. / 18 double units / 6 sections \$17.22 per dbl. unit

12" PISA II COPING 21 face ft. / 42 double units (84 lin. ft.) / 2 sections . \$8.40 per dbl. unit

12" PISA II XL WALL SINGLE UNIT . 21.33 face ft. / 32 double units (42.67 lin. ft.). \$9.30 per unit



NEVADA



SIERRA



GRANITE
Available in Coping,
Corner & XL Wall



TAPERED
8" x 6" x 12"
20cm x 15cm x 30cm



CORNER
12" x 6" x 8"
30cm x 15cm x 20cm



12" COPING
12" x 3" x 12"
30cm x 7.5cm x 30cm



XL WALL
16 x 6 x 12"
40cm x 15cm x 30cm



UNIVERSAL BASE UNIT
19" x 14" x 2"
48.2cm x 35.5cm x 5.5cm



RIVERCREST® WALL..... 24.3 face ft. / Random-128 units / Jumper-64 units . \$25.75 per face ft.
RIVERCREST® CORNER..... 20.92 face ft. / 64 units \$25.75 per face ft.
RIVERCREST® CORNER JUMPER . 12.2 face ft. / 32 units..... \$29.00 per face ft.
RIVERCREST® PILLAR UNIT 8 units per bundle..... \$83.13 per unit



COASTAL SLATE



BUFF



LONG CORNER UNIT
12" x 9-10" x 2 1/4"
31cm x 23-25cm x 5.7cm



SHORT CORNER UNIT
10" x 9-10" x 2 1/4"
25cm x 23-25cm x 5.7cm



UNIVERSAL BASE UNIT
19" x 14" x 2"
48.2cm x 35.5cm x 5.5cm



STANDARD UNIT 1
8" x 9-10" x 2 1/4"
20cm x 23-25cm
x 5.7cm



STANDARD UNIT 2
12" x 9-10" x 2 1/4"
31cm x 23-25cm
x 5.7cm



STANDARD UNIT 3
12" x 9-10" x 2 1/4"
31cm x 23-25cm
x 5.7cm



STANDARD UNIT 4
17" x 9-10" x 2 1/4"
42.5cm x 23-25cm
x 5.7cm



PILLAR UNIT
20" x 20" x 4 1/2"
(50cm x 50cm x 11.4cm)



JUMPER UNIT 1
8" x 9-10" x 4 1/2"
20cm x 23-25cm
x 11.4cm



JUMPER UNIT 2
12" x 9-10" x 4 1/2"
31cm x 23-25cm
x 11.4cm



JUMPER UNIT 3
12" x 9-10" x 4 1/2"
31cm x 23-25cm
x 11.4cm



JUMPER UNIT 4
17" x 9-10" x 4 1/2"
42.5cm x 23-25cm
x 11.4cm



JUMPER CORNER UNIT
12" x 9-10" x 4 1/2"
31cm x 23-25cm
x 11.4cm



Pillar System

SIENNASTONE® COPING..... 12 face ft. / 6 units..... \$73.20 per unit



NEVADA

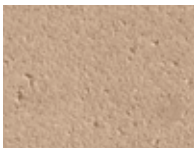


SIERRA



COPING
39" x 7 1/4" x 20"
100cm x 18.5cm x 50cm

UNIVERSAL COPING 17.43 face ft. / 48 units..... \$18.75 per unit



BUFF



GREY



UNIVERSAL COPING
19" x 14" x 2 3/4"
48.2cm x 35.5cm x 7cm

Call for contractor quotes, volume pricing and any other materials. Prices subject to change without notice.

- U-CARA™ STANDARD BACKER** 33.91 face ft. / 105 units \$2.75 per unit
- U-CARA™ LARGE BACKER** 15.85 face ft. / 56 units \$4.44 per unit
- U-CARA™ UNIVERSAL BASE** 99.46 face ft. / 54 units \$5.00 per unit
- U-CARA™ SMOOTH PANEL** 61.52 face ft. / 84 units \$6.88 per face ft.
- U-CARA™ SMOOTH CLOSED END PANEL** ... 34.98 face ft. / 42 units \$6.88 per face ft.
- U-CARA™ PITCHED PANEL** 61.52 face ft. / 84 units \$6.88 per face ft.
- U-CARA™ PITCHED CLOSED END PANEL** 34.98 face ft. / 42 units \$6.88 per face ft.



GRANITE FUSION
PITCHED FACE



BAVARIAN
PITCHED FACE



OPAL
PITCHED FACE



GRANITE FUSION
SMOOTH FACE



BAVARIAN
SMOOTH FACE



OPAL
SMOOTH FACE



28.5 PILLAR CAP
28 1/2" x 28 1/2" x 4"
72 x 72 x 10cm
Buff & Grey Only



SURE TRACK
STANDARD BACKER
6" x 8" x 6"
15cm x 20cm x 15cm



SURE TRACK
LARGE BACKER
6" x 7" x 12"
15cm x 17.5cm x 30cm



UNIVERSAL
BASE UNIT
19" x 14" x 2"
48.2cm x 35.5cm x 5.5cm



SURE TRACK
CORNER INSERT
L = 2" / 5cm



STANDARD FASCIA
HALF PANEL
6" x 9 1/4" x 2 3/8"
15cm x 23.3cm x 6cm
PITCHED & SMOOTH



CLOSED-END FASCIA
PANEL
6" x 21" x 2 3/8"
15cm x 53cm x 6cm
PITCHED & SMOOTH



STANDARD FASCIA
PANEL
6" x 18 1/2" x 2 3/8"
15cm x 46.6cm x 6cm
PITCHED & SMOOTH

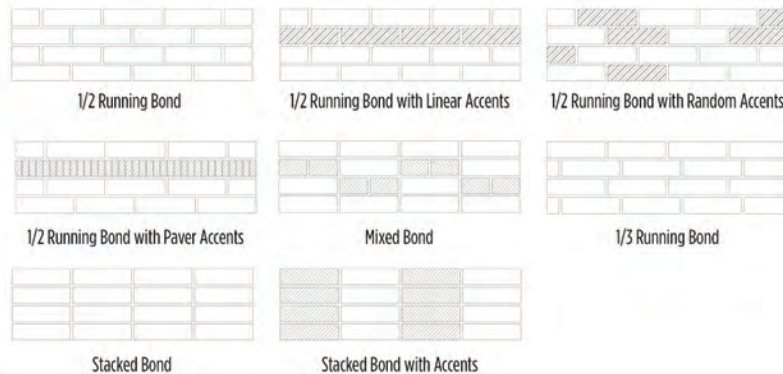


UNIVERSAL
COPING
19" x 14" x 2 3/4"
48.2cm x 35.5cm x 7cm
Buff & Grey Only

CORNER BUNDLE



U-Cara™ Fascia panels can be placed anywhere along the Sure Track Backer Block, allowing for a variety of patterns, color and texture combinations not possible with other systems.



Call for contractor quotes, volume pricing and any other materials. Prices subject to change without notice.

UNILOCK FIRE PIT KITS

Add instant charm and appeal to your backyard with a welcoming fire pit from Unilock. Each fire pit is pre-assembled in order to provide you with the easiest installation, with a variety of stone options to match your existing patio. Whether you are building a new patio, or adding to an existing one, your fire pit will become the ultimate gathering spot.

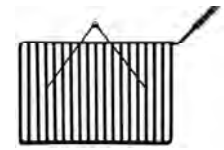
RIVERCREST® FIRE PIT KIT



This fire pit kit is built with the Rivercrest Wall.



COASTAL SLATE BUFF



FIRE PIT GRILL

Fire pit grill is included and fits securely into the firepit.

RIVERCREST FIRE PIT KIT WITH GRILL 54" outside dia. / 12 stones per pallet . . . \$1,398.00

SUNSET FIRE PIT KIT



This fire pit kit uses Brussels Dimensional Stone® (small tapered units).



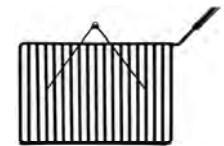
COFFEE CREEK SANDSTONE SIERRA



SQUARE



ROUND



FIRE PIT GRILL

This *optional* fire pit grill fits securely into both the round or square firepit designs.

SUNSET ROUND FIRE PIT KIT WITH GRILL 52" outside dia. / 54 stones per pallet . . \$531.00

SUNSET ROUND FIRE PIT KIT WITHOUT GRILL . . 52" outside dia. / 54 stones per pallet . . \$402.00

SUNSET SQUARE FIRE PIT KIT WITH GRILL 56" outside dia. / 48 stones per pallet . . \$543.00

SUNSET SQUARE FIRE PIT KIT WITHOUT GRILL . . 56" outside dia. / 48 stones per pallet . . \$427.00

Call for contractor quotes, volume pricing and any other materials. Prices subject to change without notice.

DELIVERY ZONE PRICES

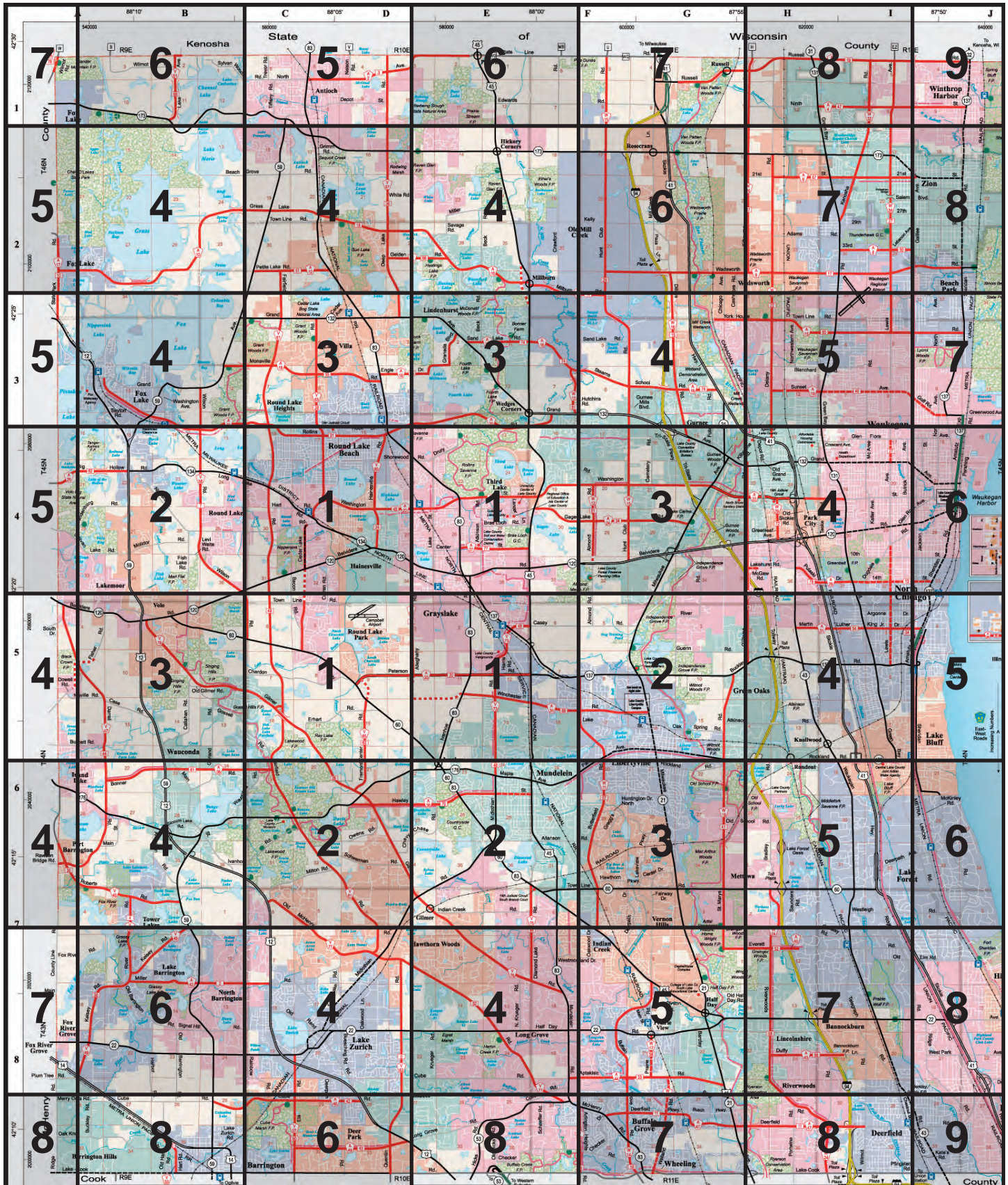
(See the next page for delivery zones or visit www.lestersmaterial.com for an interactive map)

Bulk product delivered, 2 ton or 2 yard minimum.

DELIVERY ZONE	SIX WHEELER	SEMI - FLATBED
ZONE 1	\$80.00	\$110.00
ZONE 2	\$90.00	\$120.00
ZONE 3	\$100.00	\$130.00
ZONE 4	\$110.00	\$140.00
ZONE 5	\$120.00	\$150.00
ZONE 6	\$130.00	\$160.00
ZONE 7	\$140.00	\$180.00
ZONE 8	\$155.00	\$190.00
ZONE 9	\$165.00	\$215.00
ZONE 10	\$180.00	\$230.00
ZONE 11	\$190.00	
ZONE 12	\$210.00	ADDITIONAL CHARGES
ZONE 13	\$230.00	PLUS BOBCAT - \$100.00
ZONE 14	\$250.00	WEEKEND UPCHARGE - \$20.00
ZONE 15	\$260.00	

Call for contractor quotes, volume pricing and any other materials. Prices subject to change without notice.

LAKE COUNTY DELIVERY ZONE MAP



Call for contractor quotes, volume pricing and any other materials. Prices subject to change without notice.

USEFUL FORMULAS

TO FIGURE OUT CUBIC YARDS:

Length in feet x width in feet. Take the total and divide by 27 (the amount of cubic feet in a cubic yard). The final figure will be the ESTIMATED amount of cubic yards required.

Example: To fill an area that is 15' x 30' with 6 inches of mulch would be figured as follows: 15 x 30 x .5 (6 inches converted to feet) equals 225, then take 225 and divide by 27 and that equals 8.33 yards of mulch.

TO FIGURE OUT CUBIC YARDS FOR CIRCLES:

Radius in feet x radius in feet x 3.14 x depth in feet. Take the total and divide by 27. The final figure is the amount of cubic yards required.

1 YARD OF MULCH = approximately four 40-gallon garbage bags or five 30-gallon garbage bags.

TO FIGURE TONS (sand, gravel or limestone):

Length in feet x width in feet x depth in feet. Take the total and divide by 21.6 (the amount of cubic feet in a ton). The final figure is the ESTIMATED tons required.

TO FIGURE COMPACTED TONS (crushed gravel or limestone):

Length in feet x width in feet x (inches deep x 12.22). Take the total and divide by 2000. The final figure is the ESTIMATED tons required.

1 TON OF GRAVEL = approximately four 6-cubic foot wheelbarrels full.

1 CUBIC YARD OF TOPSOIL COVERS APPROXIMATELY

1" thick320 sq. ft.	5" thick70 sq. ft.	9" thick35 sq. ft.
2" thick160 sq. ft.	6" thick60 sq. ft.	10" thick32 sq. ft.
3" thick120 sq. ft.	7" thick50 sq. ft.	11" thick30 sq. ft.
4" thick80 sq. ft.	8" thick40 sq. ft.	12" thick27 sq. ft.

TERMS & POLICIES

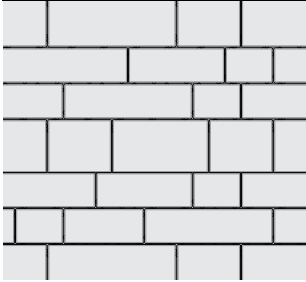
1. When we load your vehicle, you will be charged a one ton/one yard minimum with the exception of boulders or slate stone. Customers may load their own vehicle and pay for what they get.
2. Lester's is not responsible for any damage incurred to your vehicle while in the yard.
3. Prices are subject to change without notice.
4. All returns or refunds must be accompanied by a receipt.
5. A \$30 service fee will be charged on all returned checks.
6. Lester's reserves the right to impose a 25% restocking fee charge on most items.
7. Pallet deposits are refundable upon presentation of receipt **ONLY!** NO exceptions!
8. Appropriate taxes will be charged on all sales unless there is a tax exempt form (CRT-61) on file.
9. Our loaders are very skilled at approximating the amounts of bulk material put in your vehicle. However, slight overages/shortages are inevitable.
10. If a load is delivered and our driver has to wait to unload, there will be a \$45 per half hour waiting fee.
11. If Lester's delivers a load and the customer is not ready to receive the load or requests a later delivery, a delivery charge for the initial visit will be charged.
12. We accept cash, check, Visa, MasterCard and Discover. Only organizations who have completed a credit application and are entered into our system will be allowed to charge purchases.
13. House Account Terms: Net 30 days from the date of the invoice date unless otherwise arranged. Finance Charges: 1.5% monthly (18 APR).
14. Lester's is not responsible for damages beyond the curb for deliveries.

Rev. 04/18

Call for contractor quotes, volume pricing and any other materials. Prices subject to change without notice.

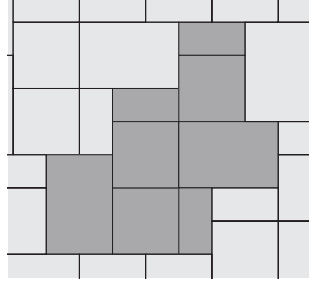
LAYING PATTERNS

ARTLINE™

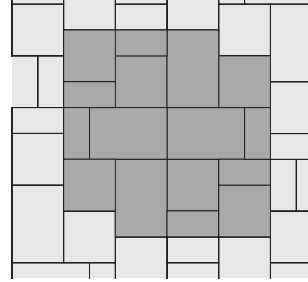


Artline A - 100% Random

BEACON HILL FLAGSTONE™/BRISTOL VALLEY®

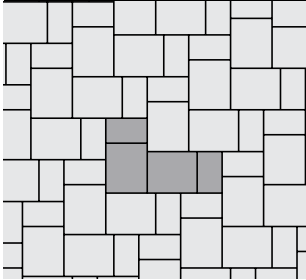


Beacon Hill Flagstone/Bristol Valley A - 40% Lg Rect, 40% Sq, 20% Sm Rect.

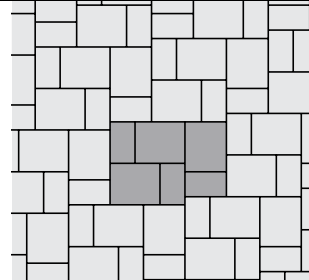


Beacon Hill Flagstone/Bristol Valley B - 40% Lg Rect, 40% Sq, 20% Sm Rect.

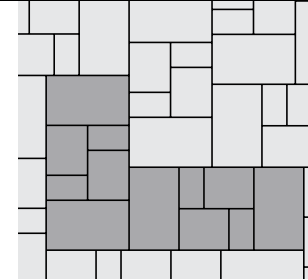
BRUSSELS BLOCK® / BRUSSELS PREMIER™



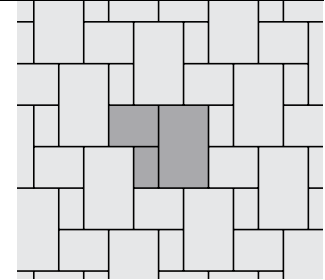
Brussels P - 67% Standard, 33% Half



Brussels O - 67% Standard, 33% Half

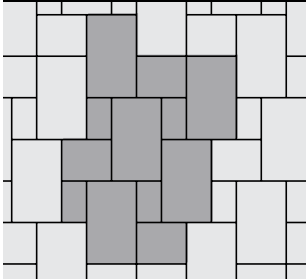


Brussels X - 57% XL, 29% Standard, 14% Half

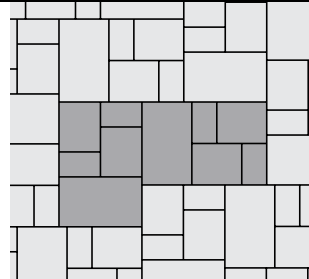


Brussels Y - 57% XL, 29% Standard, 14% Half

BRUSSELS BLOCK® / BRUSSELS PREMIER™

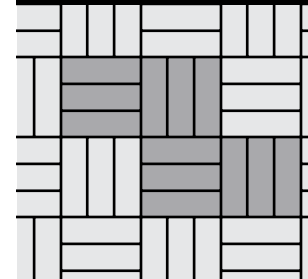


Brussels Z - 67% XL, 20% Standard, 13% Half

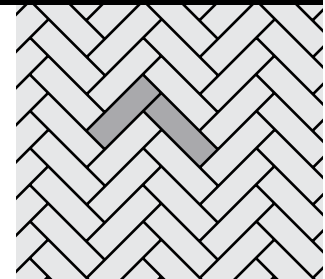


Brussels AF - 40% XL, 40% Standard, 20% Half

COPTHORNE®

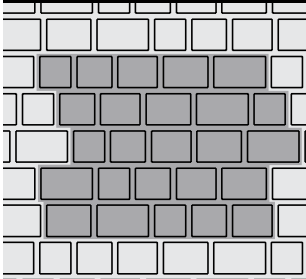


Copthorne A - 100% Standard



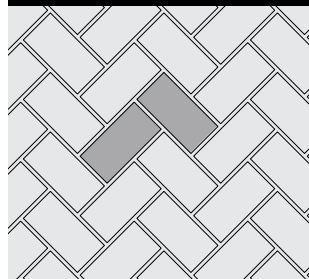
Copthorne B - 100% Standard

COURTSTONE®



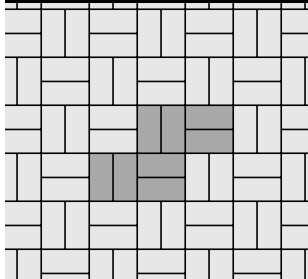
Courtstone A - 16% Sq., 18% Sm. Rec., 19% Rec., 22% Lg. Rec., 25% XL Rec.

ECO-PRIORA™

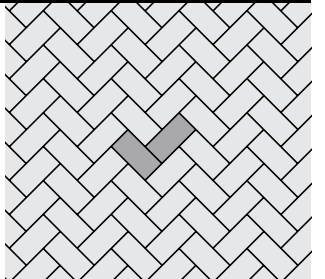


Eco-Priora E - 100% Rectangle

HOLLANDSTONE™ & HOLLAND PREMIER™

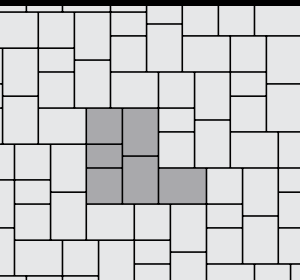


Hollandstone D - 100% 4"x8"



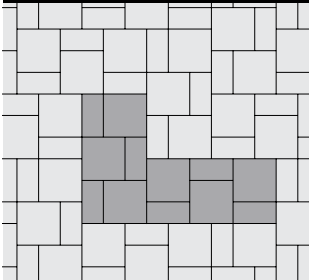
Hollandstone C - 100% 4"x8"

IL CAMPO®

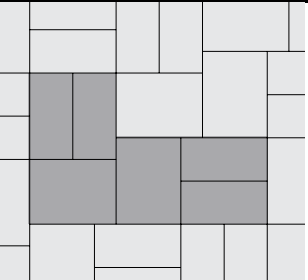


Il Campo H - 60% 6"x8", 30% 6"x6", 10% 4"x6"

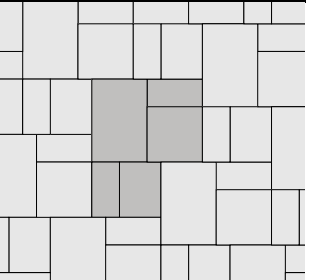
NATURAL STONE



Natural Stone C - 67% 24" x 24", 33% 12" x 24"



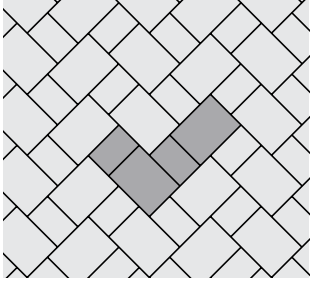
Natural Stone D - 57% 12" x 24", 43% 18" x 24"



Natural Stone F - 34% 24" x 36", 24% 24" x 24", 18% 18" x 24", 24% 12" x 24"

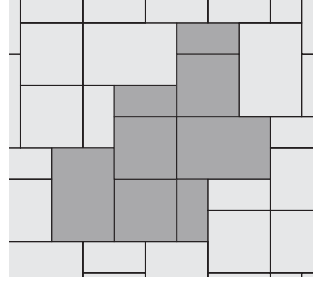
Patterns may not reflect bundle configurations. More patterns available at unilock.com.

OLDE GREENWICH COBBLE®

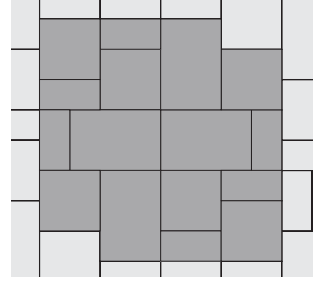


Greenwich G - 67% Large Rectangle, 33% Medium Rectangle

Series™ Random

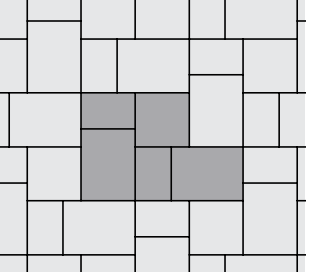


Series A - 40% Lg Rect, 40% Sq, 20% Sm Rect.

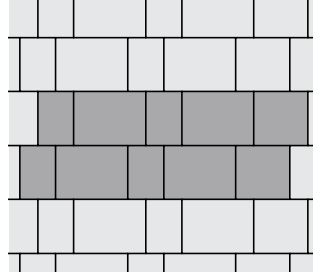


Series B - 40% Lg Rect, 40% Sq, 20% Sm Rect.

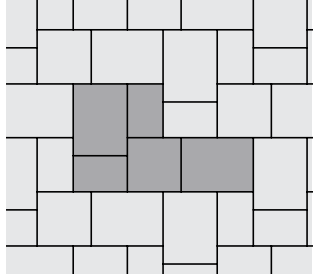
RICHCLIFF®



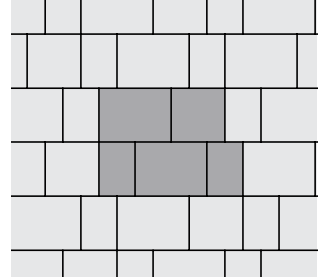
Richcliff A - 53% 12" x 9", 20% 9" x 9", 27% 6" x 9"



Richcliff B - 53% 12" x 9", 20% 9" x 9", 27% 6" x 9"

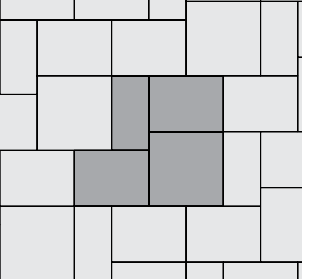


Richcliff C - 53% 12" x 9", 20% 9" x 9", 27% 6" x 9"



Richcliff D - 53% 12" x 9", 20% 9" x 9", 27% 6" x 9"

RIVENSTONE™



I - 33% 24"x24", 50% 18"x24", 17% 12"x24"

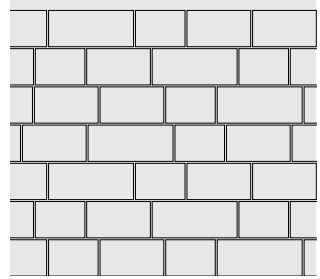


J - 29% 24"x30", 24% 24"x24", 35% 18"x24", 12% 12"x24"



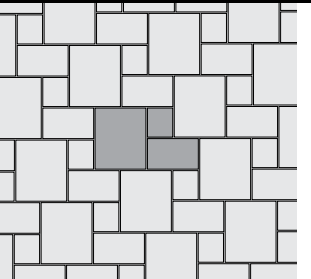
K - 36% 24"x30, 29% 24"x24", 21%, 18"x24", 14%, 12"x24"

TRIBECA COBBLE

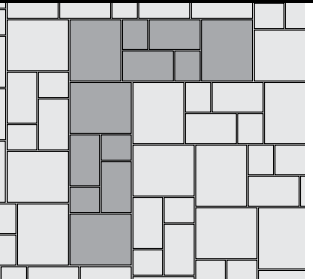


Tribeca Cobble - 100% Random Bundle

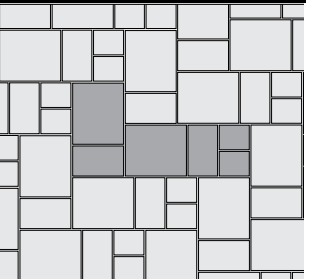
THORNBURY™



Thornbury A - 49% Large Rec., 34% Medium Rec., 17% Small Rec.

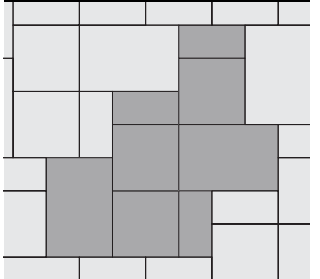


Thornbury B - 49% Large Rec., 34% Medium Rec., 17% Small Rec.



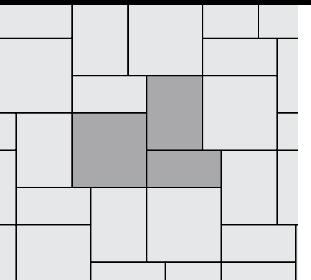
Thornbury C - 49% Large Rec., 34% Medium Rec., 17% Small Rec.

UMBRIANO® RANDOM

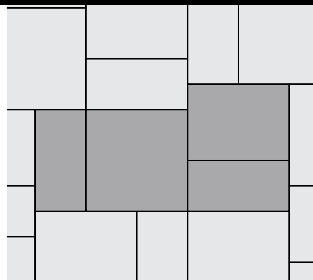


Umbriano Random A - 40% Large Rect., 40% Square, 20% Small Rect.

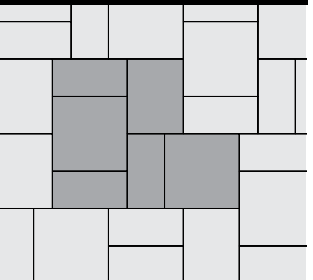
YORKSTONE™



A - 45% 24"x24", 33% 18"x24", 22% 12"x24"



J - 36% 24"x24", 28% 18"x24", 36% 12"x24"

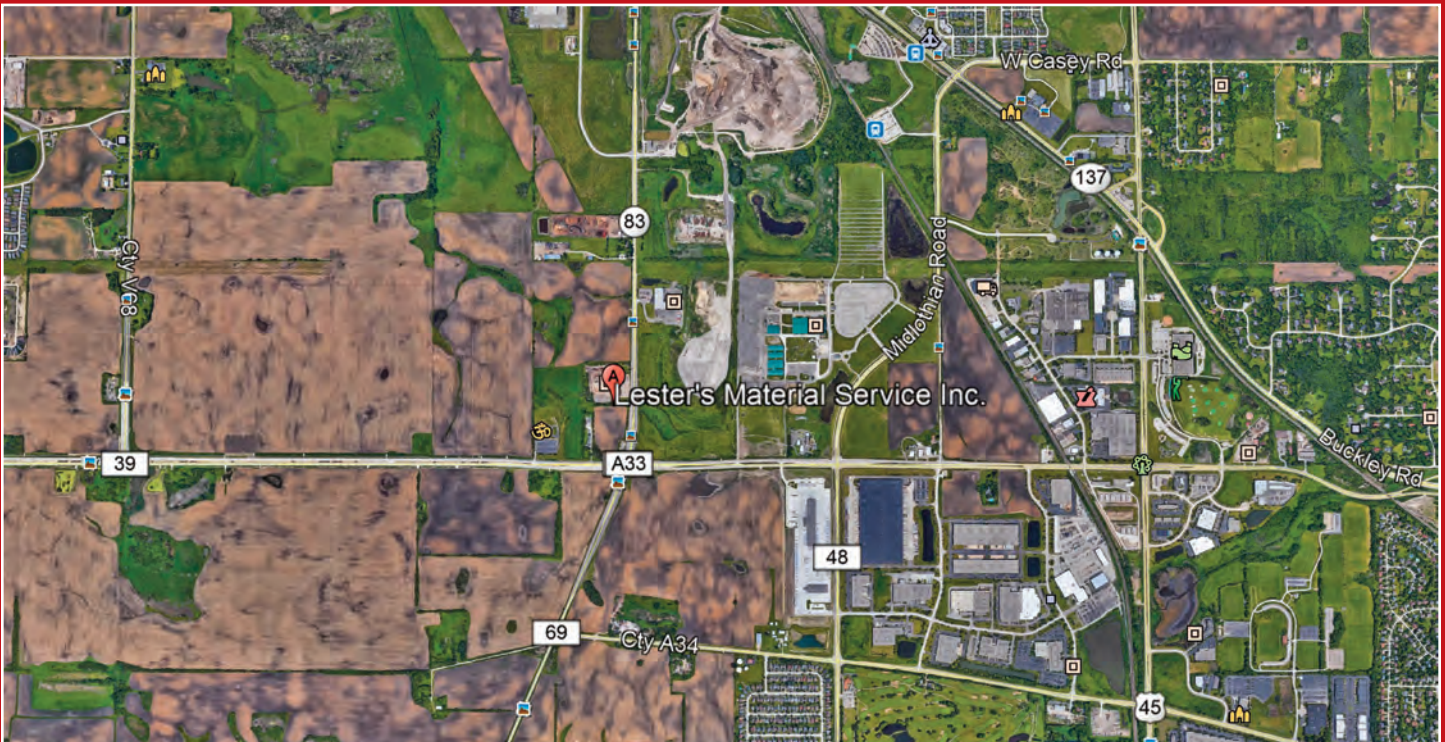


K - 47% 24"x24", 18% 18"x24", 35% 12"x24"

Patterns may not reflect bundle configurations. More patterns available at unilock.com.



Lester's Material Service operates Lake County's largest top soil operation.
Top soil can be delivered to your location or you can pick it up.
Call for the location of our topsoil fields or for pricing to your yard or jobsite.



Lester's Material Service, Inc. · Landscape Supplies Since 1960
1980 S. HIGHWAY 83 · GRAYSLAKE, IL 60030-0439
847-223-7000 · FAX: 847-223-7067 · www.lestersmaterial.com